



North of England
Critical Care Network

www.noeccn.org.uk



Follow us
on Twitter
[@noeccn](https://twitter.com/noeccn)

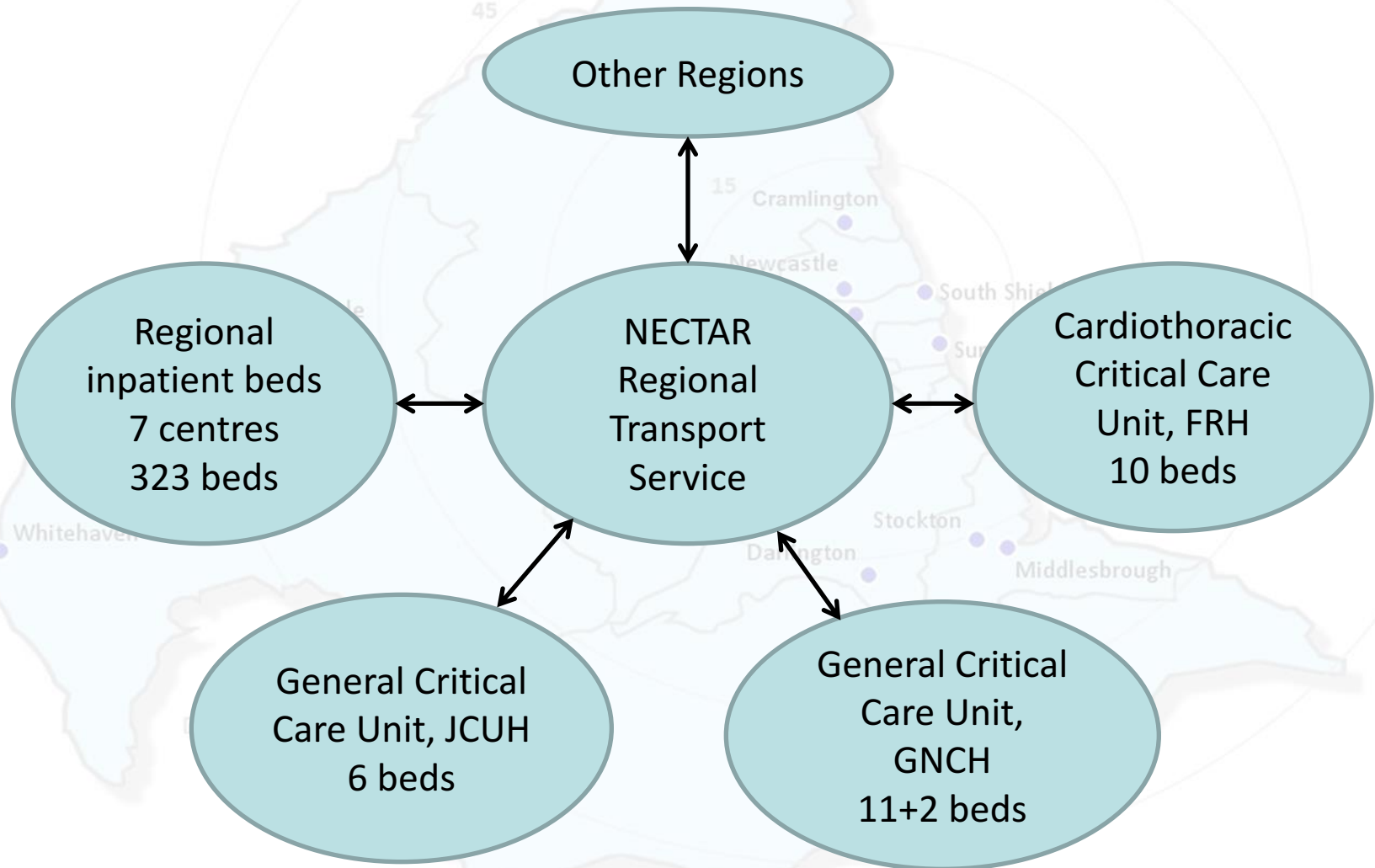
Paediatric Critical Care in the North East and Cumbria

Susan Jackson

Paediatric Medical Lead NoECCN

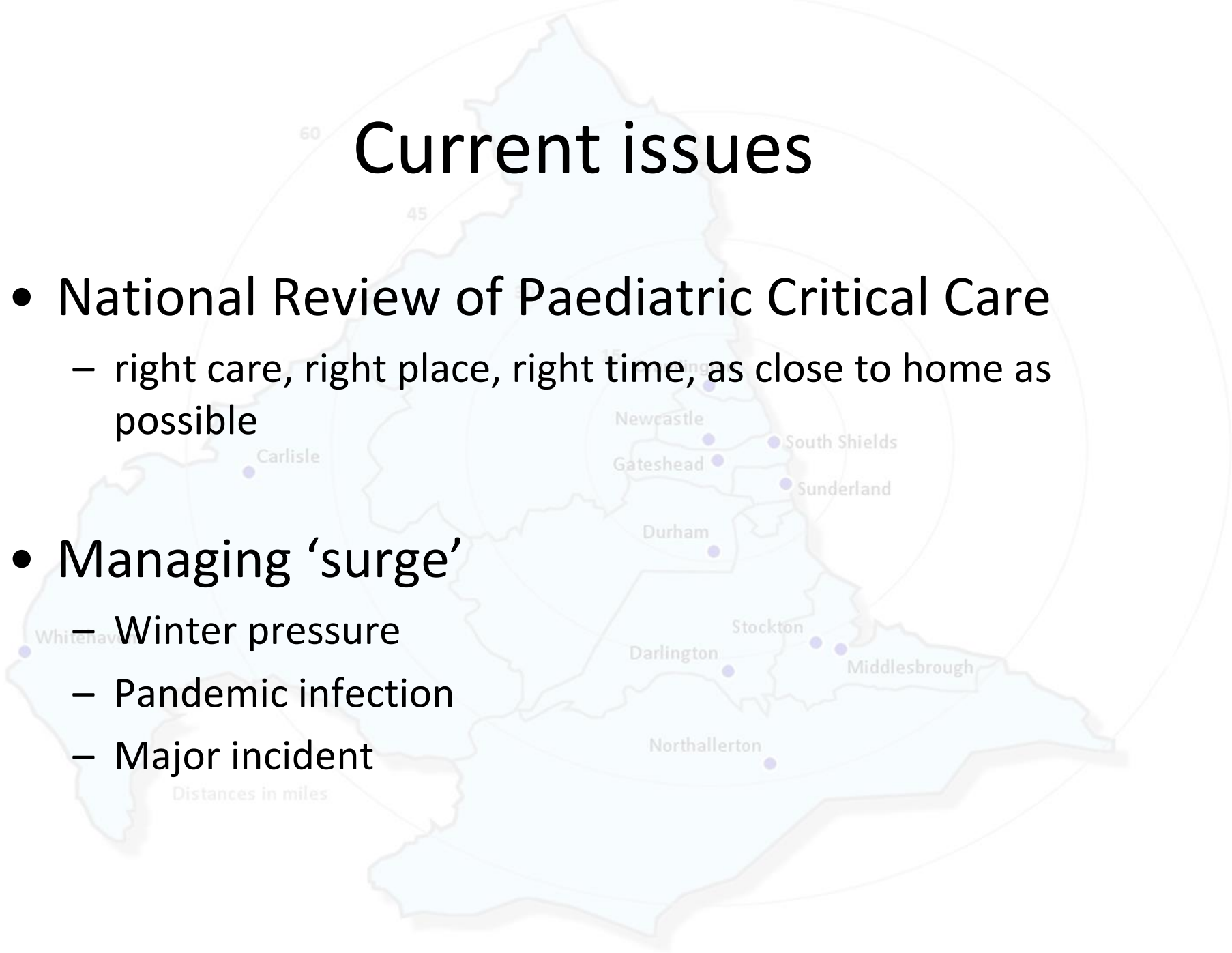
Distances in miles

An Overview



Current issues

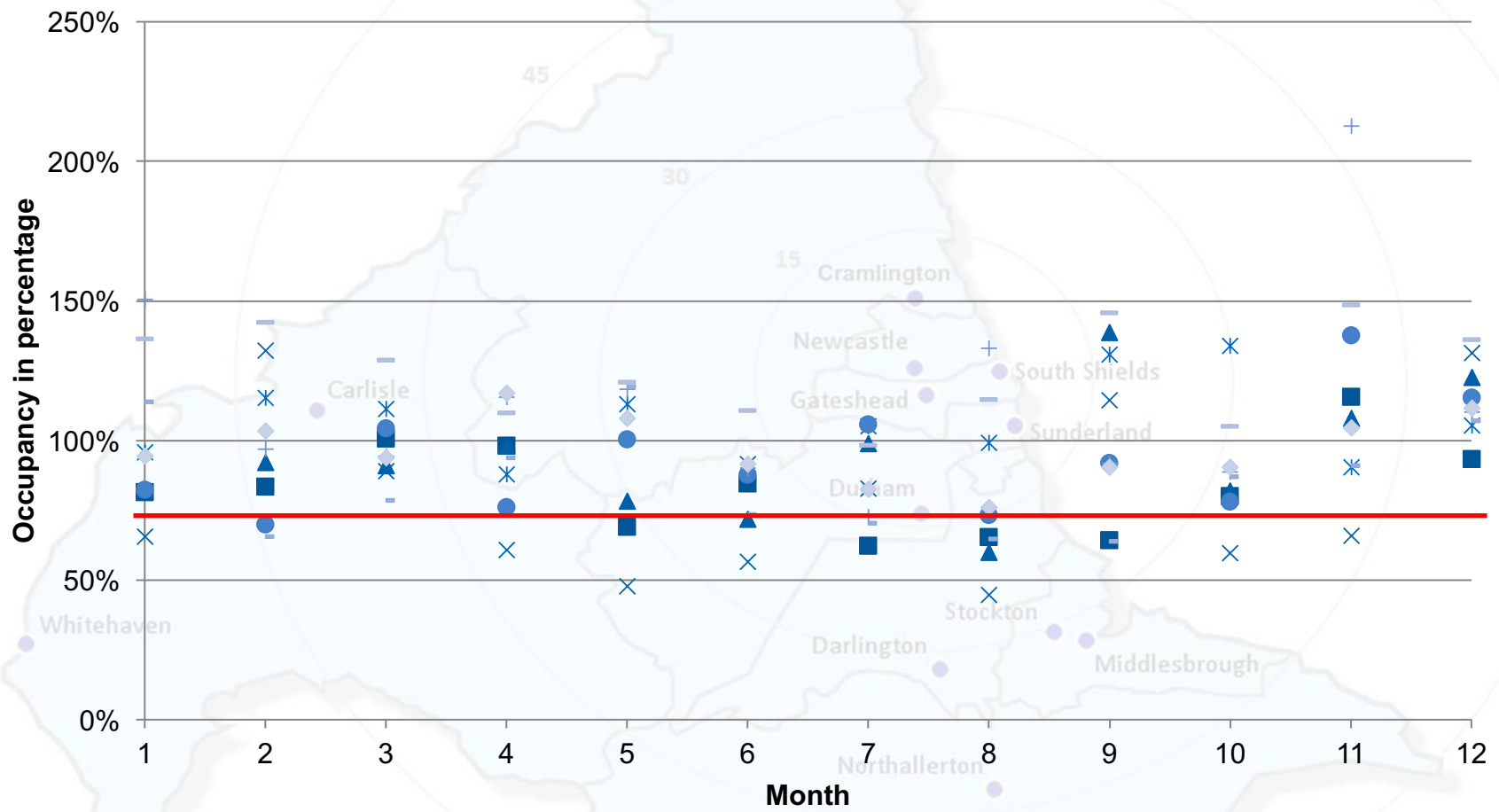
- National Review of Paediatric Critical Care
 - right care, right place, right time, as close to home as possible
- Managing 'surge'
 - Winter pressure
 - Pandemic infection
 - Major incident



National Review of Paediatric Critical Care

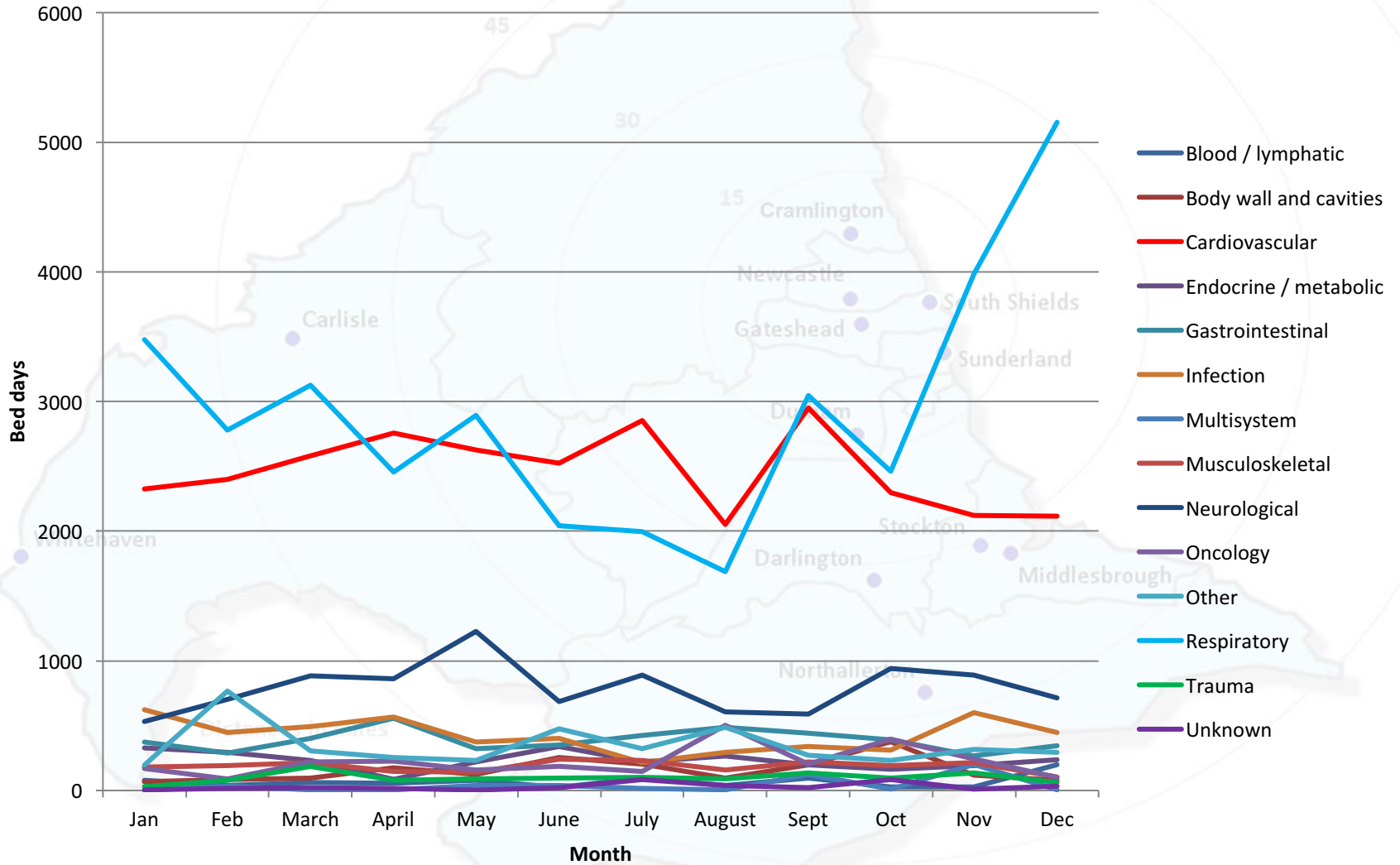
- Increased demand/changing workload
 - units operating at over 80% capacity
 - more complex patients taking more bed days with small increase in number of patients
 - seasonal bed pressures driven by respiratory illness
 - variation in case-mix and delivery of care
 - workforce challenges

PICU occupancy each month by hub



- North West
- ▲ North East
- × Yorkshire and Humber
- × West Midlands
- East Midlands
- + East of England
- South West
- Wessex
- ◆ London

2015 bed days consumed by diganostic category each month



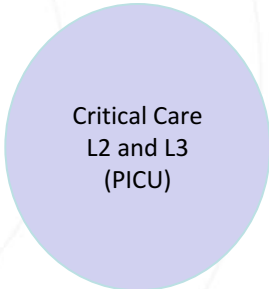
North of England Critical Care Network



Home and Primary/ community care	Small District General	Large District General	Tertiary Provider
Not funded/ commissioned by specialised commissioning, CCG and local government responsibility	Not funded/ commissioned by specialised commissioning, CCG responsibility	May be funded/ commissioned by specialised commissioning – boundary with CCG commissioning	Funded/ commissioned by specialised commissioning, NHSE responsibility



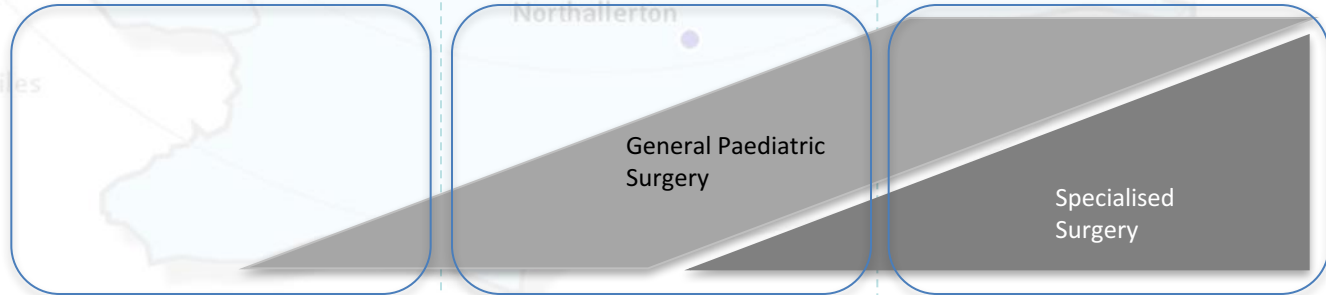
PCC network



ECMO



Surgery network



Specialist Centre

Distances in miles

Managing surge

- Winter pressure – ties in with National Review
- Pandemic infection
 - 2009 influenza pandemic prompted NE PCC Plan
- 2013 (revised 2016) NoECCN escalation plan
 - PCCEP levels 1-6
 - More generic approach
- Major incident planning in sharp focus
- Revision of escalation framework to fit National OPEL 1-4