



North of England Critical Care Network

Newsletter August 2023

**Welcome to our Quarterly
NoECCN Newsletter!**
A space to share education and
information across our region

PNA Celebration Event

Thank you to all who attended
the PNA celebration event on
13th June!

Presentations can be
accessed via our website

<https://www.noeccn.org.uk/page-1860307>



PNA Celebration June 2023



North of England
Critical Care Network
www.noeccn.org.uk



TRANSFER TROLLEY EQUIPMENT

CASCADE TRAINING BOOKLET

MAY 2023

Whats New?

Critical Care Transfer Trolleys are
being updated - date for arrival
at your unit to be confirmed

Cascade Training Booklet can
be accessed via our website

<https://www.noeccn.org.uk/Critical-Care-Transfer-Trolley-Equipment>

NEW



Yes I donate
ORGAN DONATION

Organ and Tissue Donation eLearning Package

IS NOW LIVE!



We are pleased to announce that the NHS Blood and Transplant eLearning package for Organ and Tissue Donation is now available.

This fabulous interactive package is available across all Devolved Nations designed to increase knowledge and dispell myths.

How to access:

These modules can be accessed directly through NHS Learning Hub.

Scan the QR code below to log in/ create an account with an NHS email address or via a OpenAthens account.



Module 1 - Overview of Organ and Tissue Donation.

Module 2 - Donor Management

Module 3 - Organ Retrieval and Post Donation Care

Module 1 - Overview of Organ and Tissue Donation

Organs that can be donated



Module 2 - Donor Management



Module 3 - Organ Retrieval and Post Donation Care



Also available on other eLearning platforms for example ESR: 000 Organ and Tissue Donation

Critical Care Out of Bed - Snap Audit



Snap - Shot Audit Out of Bed

Please ensure you have
nominated a member of
staff for data collection on
Wednesday 2nd August &
Sunday 6th August

<https://forms.office.com/e/ApNJrt4DkD>

CCaNDL

Critical Care Nurse Development and Leadership



Join us for a fun, interactive day and develop skills to
advance your career, topics include :
Team building, leadership, change management and
current issues.

Thursday 19th October 930-4, Evolve Business Centre DH4 5QY

Authorisation from your clinical educator is required
Book via sarah.gray13@nhs.net



Digitising of STEP Competencies

Congratulations to all involved with the digitising STEP competencies project.

With the digital version of the Adult Critical Care STEP competency framework, you can easily navigate through the competencies, track progress, and stay up-to-date with the latest advancements in critical care.

Advantages of joining the digitisation

- Greener- no trees are harmed in this process
- Managing staff- easier to keep track of learners progress
- Ease of use- sign off easy for learner and mentor

The future of adult critical care is here, and it's digital! Let's embrace this exciting new era and elevate our critical care practice to new heights!

If you join digital STEPs programme please inform NoECCN



To join the digital steps programme please contact

learningnetwork@nhselect.org.uk



End Of Life in Intensive Care



People in an Intensive Care Unit (ICU) have a life-threatening illness or injury. Even with intensive care treatment, it's possible that they might not live.

ICUsteps has information for partners, families and friends of ICU patients. It explains what happens when someone might be at the end of life in an ICU, what to expect and how to support yourself and the patient.

Find out more

Scan the QR code below to view our guide, or visit icusteps.org for additional information.



 icusteps.org/information

 ICUsteps



LaCI

At our next LaCI meeting on 8th November we are pleased to announce guest speaker Kate Tantum

#rehablegend

Network Educator

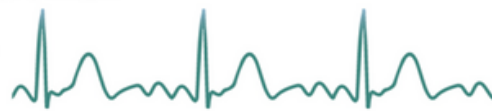
Thank you for welcoming me into your units/sharing your excellent practice and showing me around!

Everyone is so friendly & welcoming, I look forward to us growing as a community of educators and working together on future projects/sharing best practice.



RIGHT TIME • RIGHT PEOPLE • RIGHT PLACE

NORF



The National Outreach Forum

Thank you to all outreach practitioners for attending the recent Outreach Group Meeting.

To access National Critical Care Outreach Practitioner Framework please click link below

<https://www.norf.org.uk>





Dates for
your
diary.....



2nd August & 6th August
Data collection for out of bed audit

13th September
NECTAR adult case reviews/shared learning 2-3 TEAMS

3rd October
QI Group meeting 10-1130 TEAMS

10th October
CCDaG 10-11 TEAMS

17th October
JCF 930-12 TEAMS

19th October
CCaNDL - Critical Care Nurse Leadership and Development study
day. Venue Evolve DH4 5QY

8th November
LaCI Group 10-1130 TEAMS

29th November
Transfer Group 10-11:30 TEAMS



14th November
Education Group meeting- 10-11:30 TEAMS

If you require a TEAMS link for a meeting please contact
jan.malone@northumbria-healthcare.nhs.uk or sarah.gray13@nhs.net



**To contribute to the next NoECCN newsletter or to share your
ideas/success please contact**

rachel.wade@northumbria-healthcare.nhs.uk

